



Advanced Material & Metal Compounds

□ Tungsten Carbide Ball

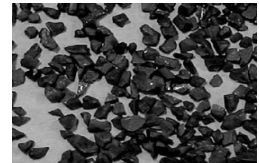
Tungsten Carbide Ball or called **cemented carbide ball**, made of tungsten carbide mixed with cobalt 6%, 8% or 10% as resistant binder, is used where extreme hardness and wear resistance is required, in such applications as wearing, ball screws, valves, grinding medium and flow meters. These balls are also used for coining and as pivots, detents, tips for gauges and tracers, inspection tools, and in highly corrosive conditions



| No. | Item | Standard Specification | |
|-----|-----------------------|---|---------|
| 1 | Tungsten Carbide Ball | Cobalt 6%, 8%, 10% | Size mm |
| 2 | Hardness | 89-92 HRA | |
| | TRS | 2400 N/mm ² | |
| | Density | 14.85 g/cm ³ | |
| | Porosity | A ₀₂ B ₀₂ C ₀₀ | |
| | Elasticity Modulus | 92,000-93,000 KPSI | |
| | Magnetic Properties | Slightly magnetic | |
| 3 | Packing | 2-5kg in small cardboard box inside, carton box outside | |

□ Tungsten Carbide Grit

Tungsten Carbide Grit, with cobalt 6%, 8%, 10%, also called Crushed Cemented Carbide, Crushed Tungsten Carbide, is a kind of material by crushing tungsten carbide with cobalt bonded alloy, usually anvil scrap and other alloy scrap to mesh size required for different application, which widely used in metal bonded products for abrasion of tough materials such as composites, fiberglass, reinforced plastics, rubber and other specialized parts by thermal spraying process.



| No. | Item | Standard Specification | | | |
|-----|-----------------------|--|---|---------|----------|
| 1 | Tungsten Carbide Grit | YG6 | YG8 | YG10 | |
| 2 | Chemical % | Co | 6.0±0.5 | 8.0±0.5 | 10.0±0.5 |
| | | Fe | 0.2% | 0.2% | 0.2% |
| | | Ti | 0.1% | 0.1% | 0.1% |
| | | WC | Balance | Balance | Balance |
| 3 | Hardness HRA Min | 91 | 90 | 89 | |
| | Density | 14.50-14.85g/cm ³ | | | |
| 4 | Size | Mesh | 3-5, 8-14, 10-16, 12-20, 16-24, 60-80 | | |
| | | mm | 3-6, 1.2-2.0, 1.0-1.65, 0.8-1.4, 0.175-0.25 | | |
| 5 | Packing | In iron drum with plastic bag inside, 50kgs net each | | | |