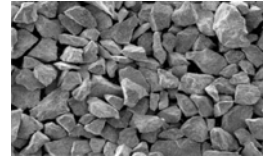




## Cast Tungsten Carbide

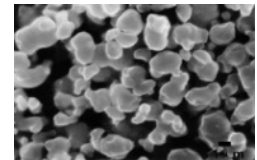
**Cast Tungsten Carbide** or **Casting Tungsten Carbide**, Tungsten Casting Carbide, is used as a reinforcing material for hard-facing of oil drilling tools, building-material production machines, grain-processing machines and other easily wearing components, which is made by melting tungsten metal (W) and tungsten mono-carbide (WC) together, a eutectic composition of WC and W<sub>2</sub>C is formed. This melt is cast and rapidly quenched to form extremely hard solid particles having a fine crystal structure. The solids are crushed and classified to various mesh sizes required.



No.	Item	Standard Specification				
1	Casting WC	Size (mesh/ mm)			Chemical	% Max each
2	Grade	YZ 5-10f	5-10	4-2	W	Ni
		YZ10-20f	10-20	2-0.84	95-96	-
		YZ20-30f	20-30	0.84-0.59	92-93	2.5-3.5
		YZ30-40f	30-40	0.59-0.42	91-92	3.5-4.5
		YZ40-60f	40-60	0.42-0.25	90-91	4.5-5.5
		YZ60-80f	60-80	0.25-0.18	Total C 3.8-4.1%, Free C 0.08% Fe 0.30, Si 0.02, V 0.05, O 0.05, Cr/Ti 0.10	
		YZ100-200f	100-200	0.18-0.074		
YZ200-400f	200-400	0.074-0.038				
3	Density	15.8-16.7g/cm <sup>3</sup>				
4	Micro-hardness	HV1700-2500				
5	Packing	In sealed plastic bag, iron drum outside, 50/100kgs net.				

## Tungsten Carbide

**Tungsten Carbide**, dark grey powder, a made up of chemically bonded tungsten and carbon, is main material for production of cemented carbide. Its superior hardness enables it to replace steel and other metal alloys in a variety of applications, such as electronics, metal and plastic machining, wood cutting and other tools, and also used for waste disposal.



No.	Item	Standard Specification				
1	WC	Size μm	O max	Chemical Composition		
2	Grade	WC10-13	1.0-1.4	0.15%	Main Content	WC 99.8%
		WC14-17	1.4-1.8	0.10%	Total C	6.13±0.05%
		WC18-23	1.8-2.4		Free C	0.06%
		WC24-29	2.4-3.0	0.08%	Fe	0.02%
		WC30-39	3.0-4.0		Ca	0.002%
		WC40-49	4.0-5.0		K/Na	0.0015%ea
		WC50-69	5.0-7.0	0.05%	Mo	0.01%
		WC70-99	7.0-10.0		Al	0.002%
		WC100-139	10.0-14.0		Si	0.004%
		WC140-199	14.0-20.0		S	0.001%
WC200-259	20.0-26.0	Mg	0.001%			
3	Packing	In iron drum with sealed plastic bag inside, 50/100kgs net each				