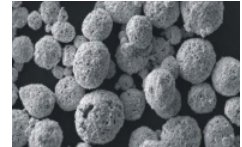




Advanced Material & Metal Compounds

□ Cemented Carbide Powder for Hard-surfacing

Cemented Carbide Powder for Hard-surfacing, Tungsten Carbide based and Chromium Carbide based Thermal Spraying Powder (TSP), being spherical or nearly spherical with good flowability, features in unique properties such as good abrasion, corrosion and high temperature resistance etc. It is suitable for various kinds of spraying and plasma spraying welding etc.



| No. | Item | | Standard Specification | | | | | |
|--------------------------------------|------------------------------|---|--|-----------|-----------|-----------|-------|-------|
| | | | T.C % | Co % | Cr % | Ni % | Fe % | O % |
| 1 | Grade | | | | | | | |
| 2 | TSP42 | WC-12Co | 5.2-5.6 | 11.5-12.5 | - | - | ≤1.0 | ≤0.5 |
| | TSP42D | WC-12Co | 5.2-5.6 | 11.5-12.5 | - | - | ≤0.15 | ≤0.5 |
| | TSP43 | WC-17Co | 4.7-5.2 | 16.5-17.5 | - | - | ≤1.0 | ≤0.5 |
| | TSP43D | WC-17Co | 4.7-5.2 | 16.5-17.5 | - | - | ≤0.15 | ≤0.5 |
| | TSP45 | WC-10Co4Cr | 5.2-5.6 | 9.1-10.1 | 3.0-4.5 | - | ≤1.0 | ≤0.5 |
| | TSP45D | WC-10Co4Cr | 5.2-5.6 | 9.1-10.1 | 3.0-4.5 | - | ≤0.15 | ≤0.5 |
| | TSP46D | WC-9Co5Cr1Ni | 5.1-5.8 | 8.5-9.5 | 4.5-5.5 | 0.8-1.2 | ≤0.3 | ≤0.5 |
| | TSP47D | WC-10Ni | 5.3-5.8 | - | - | 9.0-11.0 | ≤0.2 | ≤0.5 |
| | TSP48D | WC-20Cr ₃ C ₂ -7Ni | 5.8-6.4 | - | 20-23 | 6.0-8.0 | ≤0.5 | ≤0.5 |
| | TSP49D | Cr ₃ C ₂ -37WC-18NiCoCr | 7.8-8.4 | 3.0-4.0 | 39.5-42.5 | 10.5-12.5 | ≤0.5 | ≤0.5 |
| | TSP51D | Cr ₃ C ₂ -20NiCr | 9.7-10.7 | - | Balance | 15.0-17.0 | ≤0.15 | ≤0.5 |
| | TSP52D | Cr ₃ C ₂ -25NiCr | 9.1-10.1 | - | Balance | 19.0-21.0 | ≤0.15 | ≤0.5 |
| | TSP91D | WC-12Ni | 5.2-5.6 | - | - | 11.5-12.5 | ≤0.2 | ≤0.5 |
| | TSP92D | WC-17Ni | 5.0-5.3 | - | - | 16.5-17.5 | ≤0.2 | ≤0.5 |
| | TSP93D | WC-15NiCr | 5.0-5.4 | - | 2.5-3.5 | 11.5-12.5 | ≤0.5 | ≤0.5 |
| 3 | Density g/cm ³ | WC Based | Apparent Density ≥4.0 | | | | | |
| | | Cr ₃ C ₂ Based | Apparent Density TSP49D ≥2.5, TSP51D TSP52D ≥2.0 | | | | | |
| 4 | Size | μm | 53-20 | 45-20 | 45-15 | 45-11 | 38-10 | 30-10 |
| | Flow Rate s/50g | WC Based | ≤18 | ≤18 | ≤18 | ≤18 | ≤18 | ≤30 |
| Cr ₃ C ₂ Based | | - | - | - | - | - | - | |
| 5 | Grain Morphology | | TSPXXD is spherical or nearly spherical by Agglomerated and Sintered | | | | | |
| 6 | Packing | | 25kg or 50kgs in plastic bag with iron drum outside | | | | | |